

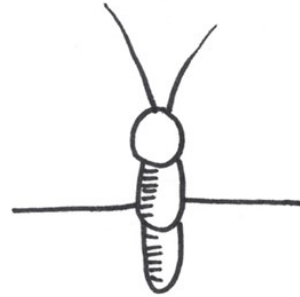
DRAW A BUTTERFLY!



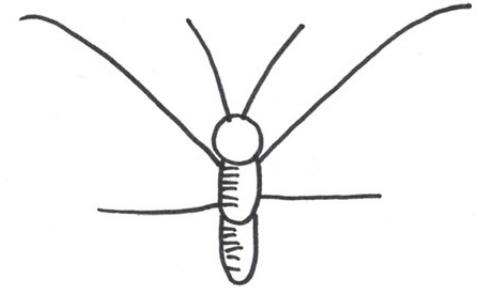
1. Draw a small circle for a head. Add a U shape to make the thorax.



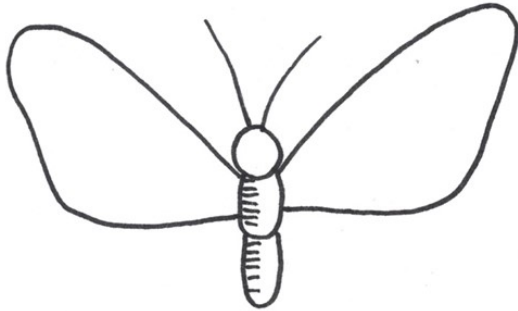
2. Add another U shape to make the abdomen. Add antenna with a V on the head.



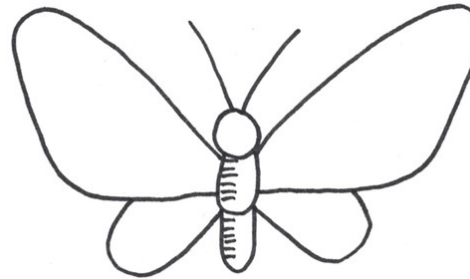
3. Add small dashes on one side of the thorax and abdomen. Draw two short, horizontal lines that extend from the middle of the thorax.



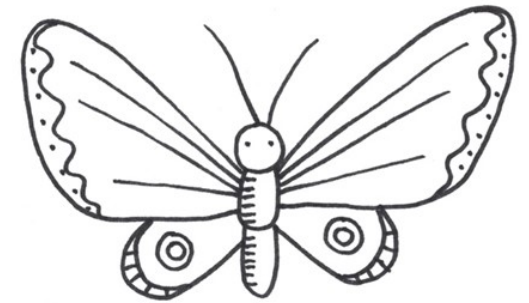
4. Beginning at the top of each side of the thorax, draw a long, slightly curved line to outline the top of each forewing.



5. Connect the top and bottom lines with



6. Add the two hindwings. Each one should start at the middle of the forewing and will connect at the base of the thorax.



7. Add some eyes, decorative edges, and patterns to your butterfly's wings.

PLANT A POLLINATOR GARDEN

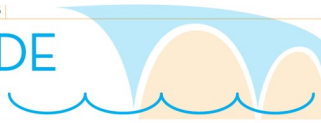
When adding plants to your garden to help the pollinator population, especially butterflies, it is helpful to include plants that provide nectar and are a good home for hungry caterpillars! Try adding a few of the following plants to your garden:

- There are many varieties of milkweed that will provide food for monarch caterpillars and butterflies.
- Hello Yellow (*Asclepias tuberosa*), Lady in Black (*Aster lateriflorus*), and Green Twister (*Echinacea purpurea*) are common plants to Wisconsin and will bring a bit of color to any garden.

SEE THE SHOW

MONONA TERRACE PRESENTS

LAKESIDE
KIDS!



WED, AUGUST 12, 10-11 AM ONLINE

BUTTERFLY EXPLORATION AT OLBRICH GARDENS

OLBRICH
BOTANICAL
GARDENS

